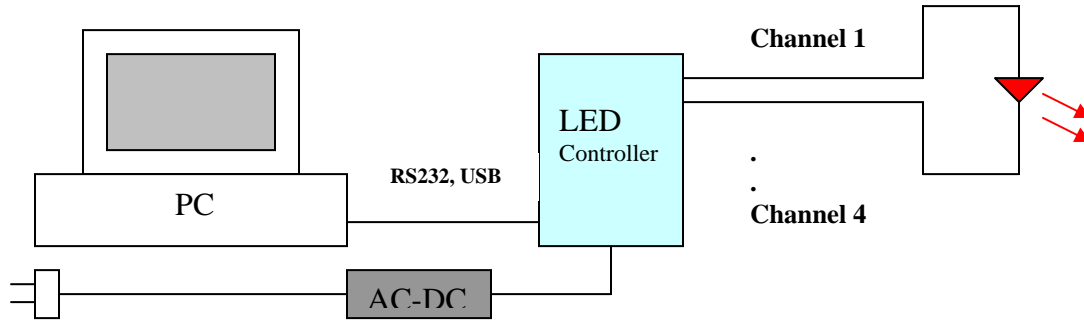


Sirius™ LED Controller PC Software Quick Guide

DEVICE SETUP

The PC software expects the following setup:



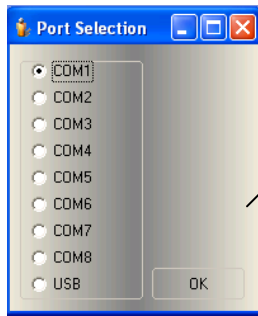
SOFTWARE INSTALLATION AND OPERATION

INSTALLATION:

You simply copy the EXE and DLL files into your target directory, maybe some other sample channel profile files from us.

OPERATION:

1). You can simply run the EXE file in your installation directory, and select the actual PORT you device connects.

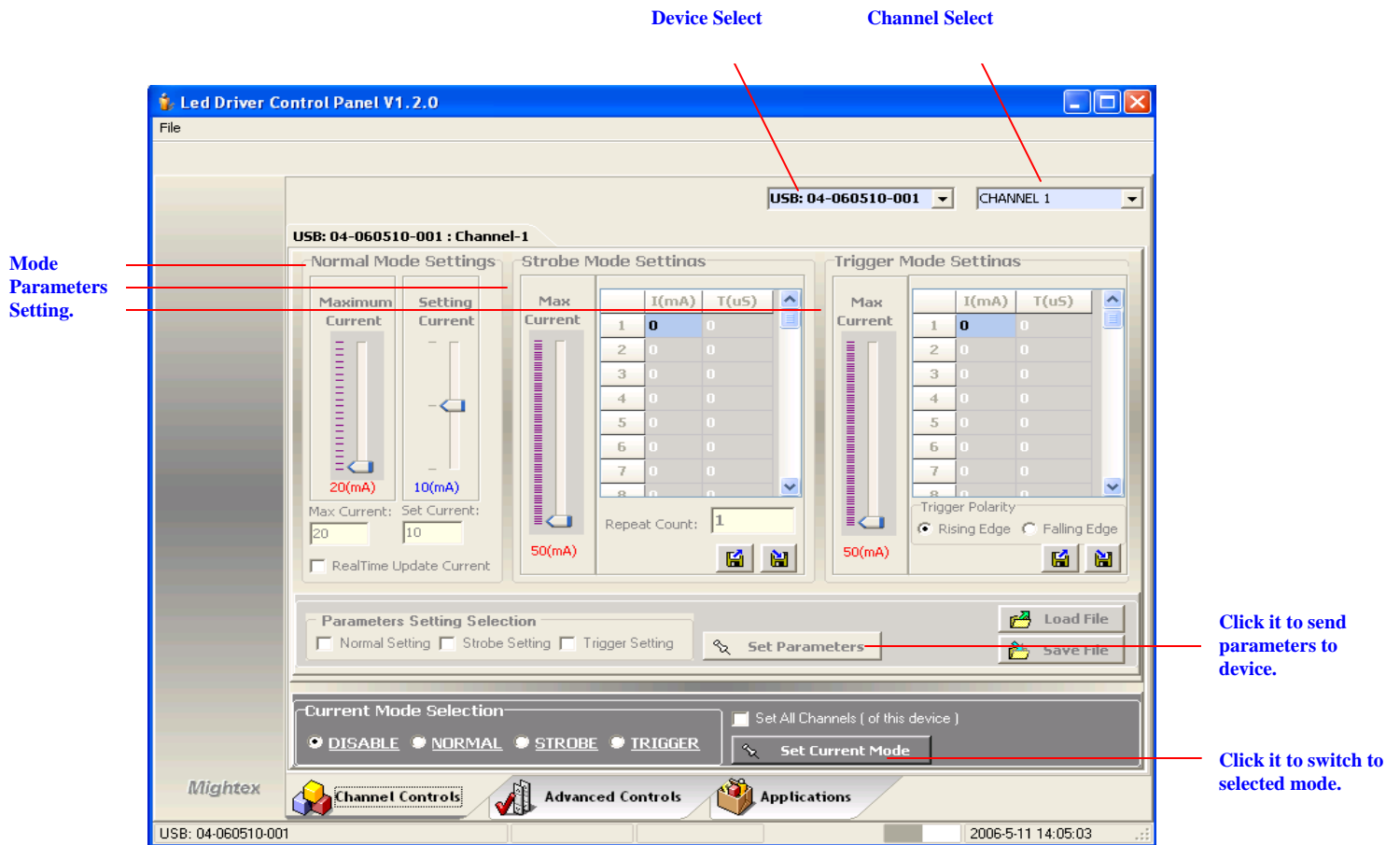


Make sure the devices (in case of USB devices, multiple devices can be connected to PC) are properly connected to PC and powered on, before you running the PC software.

2). The main window shows up, you should select the device, channel, and then set proper mode parameters for this channel, for each channel, it has three modes: **NORMAL**, **STROBE** and **TRIGGER**, each has its parameters.

3). After parameters setting, you can use **[Set Parameter]** button (Check the boxes whose parameters you want to set to device) to send the parameters to device.

4). While parameters are properly set for each mode, choose the current working mode and click the **[Set Current Mode]** button to switch to the selected mode.



*. For **STROBE** and **TRIGGER** mode, user may set the (Current, Time) pairs (maximum 128 pairs) for the driving profile, user can either input from an Excel CSV file, or edit manually. We have several sample files come with the software. Note that a (0,0) pair is required as the end of the profile. For STROBE mode, there's a "Repeat Count", user can set it for repeating the profile.

An Example of the profile:

```

10, 100000
20, 100000
30, 100000
100, 50000
30, 100000
20, 100000
10, 100000
0, 0          --- End of the Profile (it's a MUST).

```

Note: For FA/FV/XA/XV modules, as the current resolution is 100uA (0.1mA), on the GUI, it will show xxx(0.1mA) for Imax and Iset, e.g. 20(0.1mA) for default Imax, this is actually 2.0mA. And when user sets the current, user should put a current value with "0.1mA" unit, e.g. when user wants to set 30.0mA, user should set Imax to 500 (which means 50.0mA) and Iset to 300 (which means 30.0mA).

For all details of the PC software and the Device operation, please refer to the User Manual.